



These course maps are for illustrative purposes only - NOT to be used for navigation

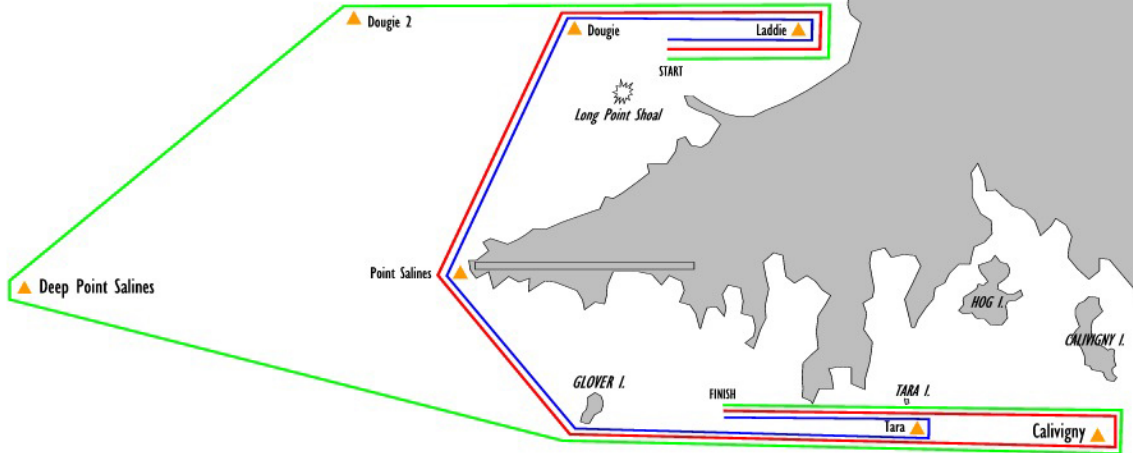
Starting Area Location: Grand Anse Bay

Grenada Sailing Association  
**Course A**  
Grand Anse to South Coast

**Course A1 Blue**  
Start: Laddie to port:  
Dougie to port:  
Point Salines to port:  
Glovers Island to port:  
Tara to port: Finish.

**Course A2 Red**  
Start: Laddie to port:  
Duggie to port:  
Pont Saline to Port:  
Glovers Island to port:  
Calivigny to port:  
Finish.

**Course A3 Green**  
Start: Laddie to port:  
Duggie 2 to port:  
Deep Point Saline to Port:  
Glovers Island to port:  
Calivigny to port:  
Finish.



N.B. Long Point Shoal & the Porpoises shall rank as an obstruction.

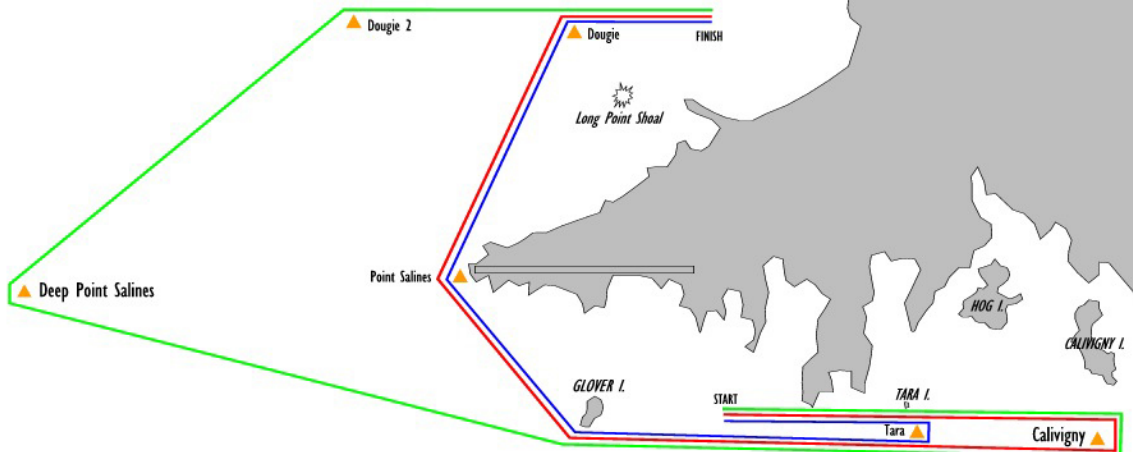
Starting Area Location: South of True Blue Bay & East of Glover Island

Grenada Sailing Association  
**Course B**  
South Coast to Grand Anse

**Course B1 Blue**  
Start: Tara to stbd:  
Glovers Island to stbd.:  
Point Saline to stbd.:  
Dougie to stbd.:  
Finish

**Course B2 Red**  
Start:  
Calivigny to Stbd:  
Glovers Island to Stbd.:  
Point Saline to Stbd.:  
Dougie to Stbd.:  
Finish

**Course B3 Green**  
Start:  
Calivigny to Stbd:  
Glovers Island to Stbd.:  
Deep Point Saline to stbd.:  
Dougie 2 to Stbd.:  
Finish



N.B. Long Point Shoal & the Porpoises shall rank as an obstruction.

Starting Area Location: Grand Anse Bay

Grenada Sailing Association  
**Course C**  
Offshore

**Course C1 Blue**  
Start: Laddie to port: Dougie to port:  
Deep Point Salines to port: Glovers Island to port  
University to port: Glovers Island to stbd:  
Point Saline to Stbd: Dougie to stbd:  
Finish St George's harbour

**Course C2 Red**  
Start: Laddie to port: Dougie to port:  
Deep Point Salines to port: Glovers Island to port  
University to port: Glovers Island to stbd  
Deep Point Salines to Stbd: Dougie to stbd:  
Finish St George's harbour

**Course C3 Green**  
Start: Laddie to port: Dougie 2 to port:  
Hugo to port: University to port:  
Glovers Island to stbd: Deep Point Saline to Stbd:  
Dougie to stbd:  
Finish St George's harbour

