



Camper & Nicholson's  
YACHTING SINCE 1782  
MARINAS  
GRENADA  
WEST INDIES



# Grenada Sailing Festival

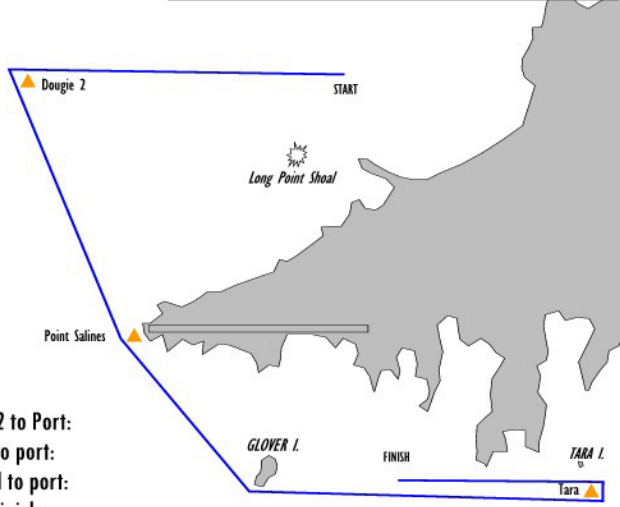
29 Jan - 2 Feb 2010 Pure Sail, Pure Spice

These course maps are for illustrative purposes only - NOT to be used for navigation

## Multihull Courses Only

Starting Area Location:  
Grand Anse Bay

Grenada Sailing Association  
**Course Multihull A**  
Grand Anse to South Coast



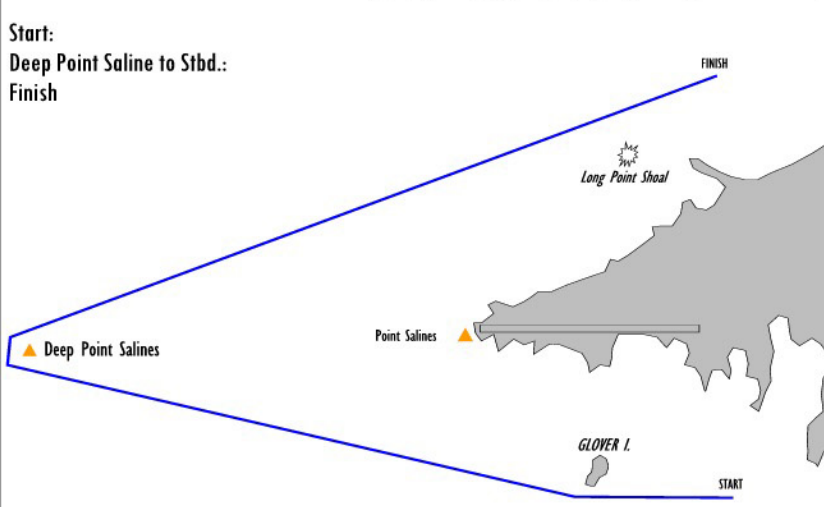
Start: Dougie 2 to Port:  
Point Salines to port:  
Glovers Island to port:  
Tara to port: Finish.

*The Porpoises*

N.B. Long Point Shoal & the Porpoises shall rank as an obstruction.

Starting Area Location:  
South of True Blue Bay  
& East of Glover Island

Grenada Sailing Association  
**Course Multihull B**  
South Coast to Grand Anse

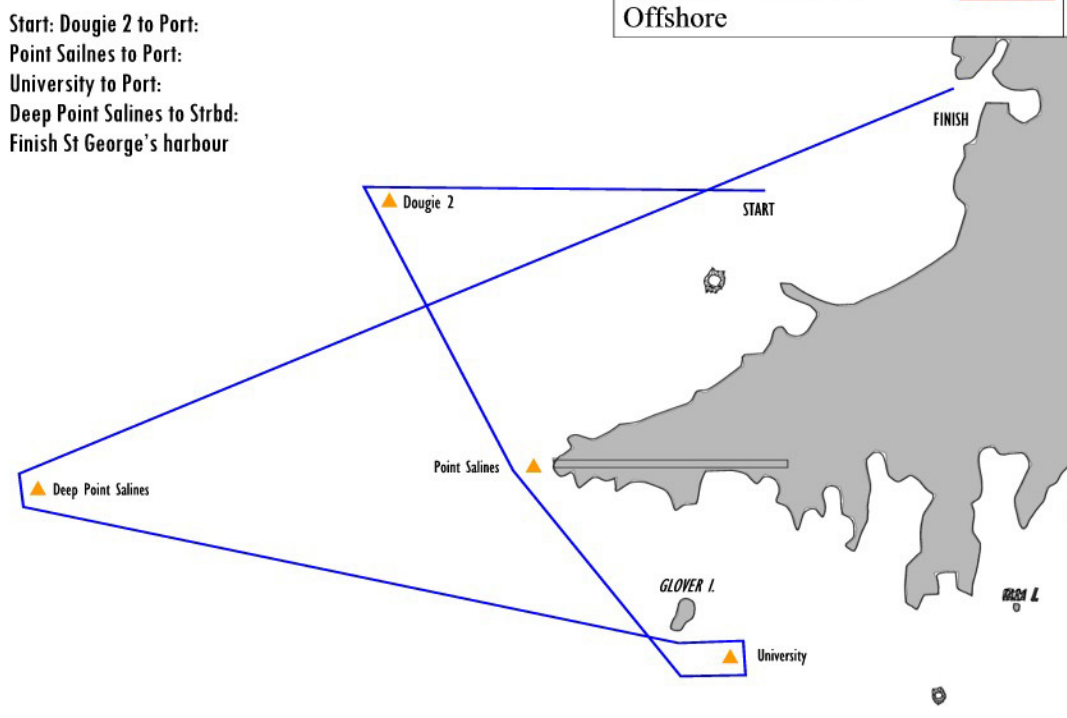


Start:  
Deep Point Saline to Stbd.:  
Finish

N.B. Long Point Shoal shall rank as an obstruction.

Starting Area Location: Grand Anse Bay

Grenada Sailing Association  
**Course Multihull C**  
Offshore



Start: Dougie 2 to Port:  
Point Salines to Port:  
University to Port:  
Deep Point Salines to Strbd:  
Finish St George's harbour